

Community Wi-Fi Hotspots

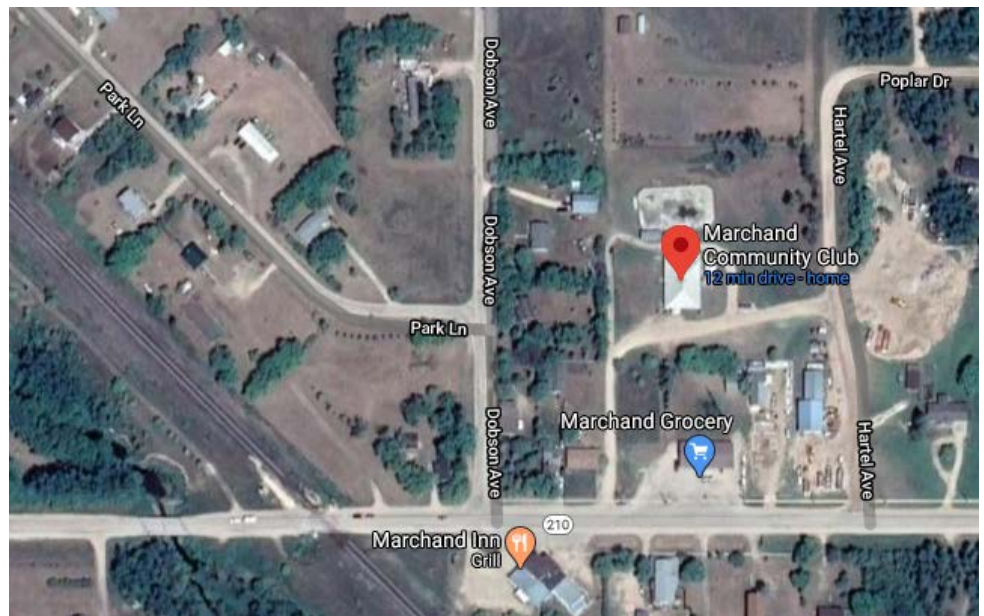
The Seine River School Division has partnered with communities to create alternate (non-school) Wi-Fi hotspots which will allow families drive-up Internet access.

We'd like to thank the Marchand Community Club, the Ross Community Center, Simply Connected, the Ste. G's General Store, and the Woodridge Community Hall for helping the SRSD create opportunities for students to get connected to the Internet and to continue learning. We feel very fortunate to have amazing community partners working with us.

We would ask families to respect recommendations from Manitoba Health at all times. Families should remain in their vehicles while connecting to these community Wi-Fi hotspots. Please be respectful for the facilities and other families, and only stay connected to the hotspot as long as is needed to access assignments and videos related to your child's learning.

Marchand

The Marchand Community Club is allowing families to park in the Community Club parking lot or near the park and connect to their Wi-Fi network at either location. There is no Wi-Fi network password.



Ross

The Seine River School Division has created a Wi-Fi hotspot at the Ross Community Centre. The centre is allowing families to park in their parking lot while connecting to the **SimplySRSD** network. The Wi-Fi password is **SRSDwifi20**.



St. Genevieve

The Seine River School Division has created a Wi-Fi hotspot at the Ste. G's General Store. The store is allowing families to park in their parking lot while connecting to the **SimplySRSD** network. The Wi-Fi password is **SRSDwifi20**.



Woodridge

The Woodridge Community Hall is allowing families to park in their parking lot and connect to their Wi-Fi network. The password for the Wi-Fi access point is **woodridge**.

